

**New CNC
OSAI CNC
10/510i Light**

**Customer PC
Remote Diagnostic
with TEAMVIEWER
via Internet possible**

**New HMI
WinMedia PanelPC
Operator Console**

USER Screens / Configurations- and Diagnostic- Tools

- OV 93000709T [10/510i Light]
- OV 93000666R [1.8 GB]
- OV 93000656D [6 Axis]
- OV 93000573E [3 Axis exp.]
- OV 93000558Z [MC-SW E69]
- OV 93000565N [ASSET E73]
- OV 93000494G [WinNBI A03]
- OV 93000195A [WinNBI A02]
- OV 93000225J [DocKit engl.]

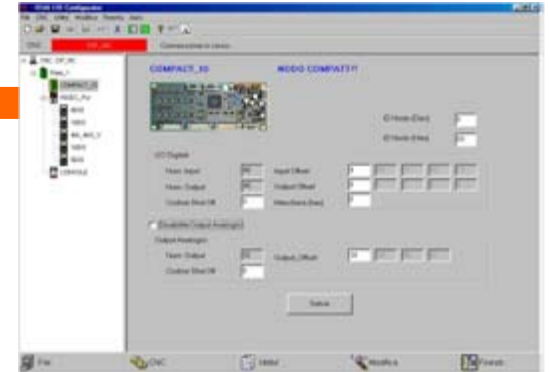


PC provided by the customer
LAN-cable prov. by customer

- OV 93000736M [WinMedia]
- OV 93000747C [512Mb RAM]
- OV 93000684E [WindowsXP]
- OV 93000597F [CD-Rom]
- OV 93000599U [Keyboard]
- OV 93000648W [Console]



OSAI WinNBI User Screen



Configurations- and Diagnostic- Tools



- OV 28142277U [15m]
- OV 28142280U [104TX]
- CE SL5.100 [ALI S/10]
- OV 28142225Q [1m]

analogue Reference



- OV 97810000T [Term]
- OV 97811504C [15m]

Handwheel (A)

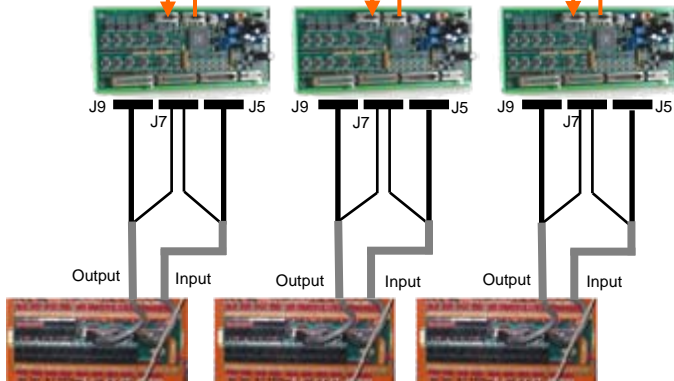
Spindle Converter (S)

analogue Reference



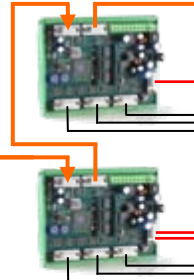
OS-Wire BUS

- OV 97810103D [1.0m]
- OV 97810033Z [0.3m]
- OV 97810033Z [0.3m]
- OV 93000539A [C-I/O]
- OV 93000539A [C-I/O]
- OV 93000539A [C-I/O]
- OV 2817495V [1.5m]
- OV 2817495V [1.5m]
- OV 2817495V [1.5m]



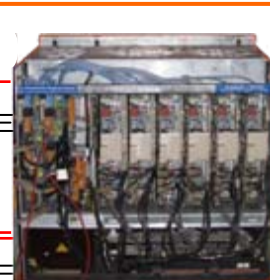
1. I/O Module 2. I/O Module 3. I/O Module

**existing I/O – module connected with
Compact I/O's via OS-Wire BUS**

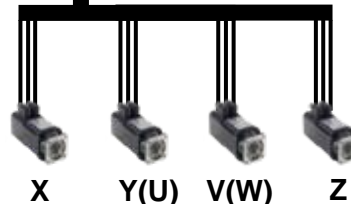


- OV 97810203E [2.0m]
- OV 93000577N [Bridge]
- OV 97810033Z [0.3m]
- OV 93000577N [Bridge]

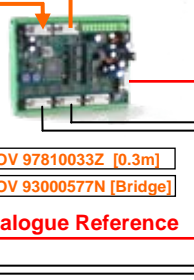
**existing axis
encoder
connected
through
Bridge via
OS-Wire BUS**



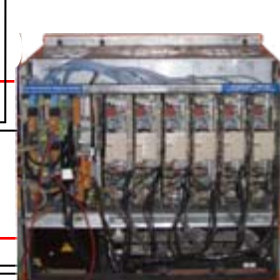
1. Simodrive 6SC



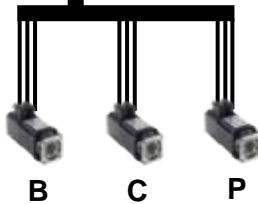
**existing analogue drives connected through
Bridge via OS-Wire BUS**



analogue Reference



2. Simodrive 6SC



Milling head

**existing
milling head
connected via
analogue
Interface**